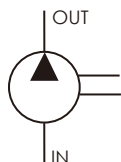


# HGP-1.5A

- ▶ Displacement : 0.8~8 cc/rev
- ▶ Max. Pressure : 350 kgf/cm<sup>2</sup>  
( 4900psi )



## SCHEMATIC SYMBOL



## ORDER CODES

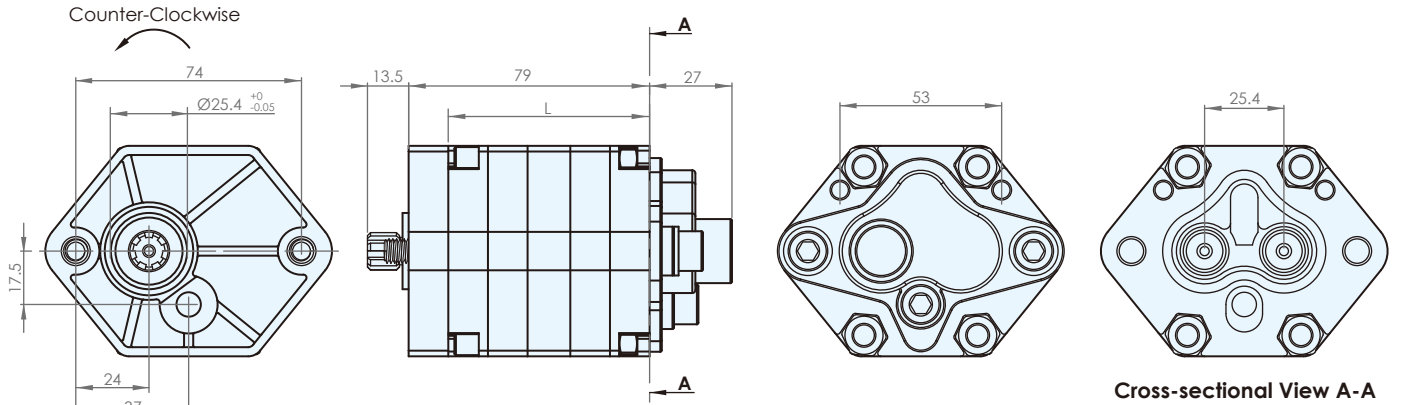
**HGP-1.5A** - **F** **2** **L** - **Y**

1
2
3
4
5

<b>1</b> Model Name	HGP-1.5A	
<b>2</b> Mounting	F	flange type
<b>3</b> Delivery Capacity	08, 1, 12, 16, 2, 25, 3, 4, 5, 65, 8	
<b>4</b> Rotation Direction	L	counter - clockwise
<b>5</b> Shaft Type	Y	spline shaft

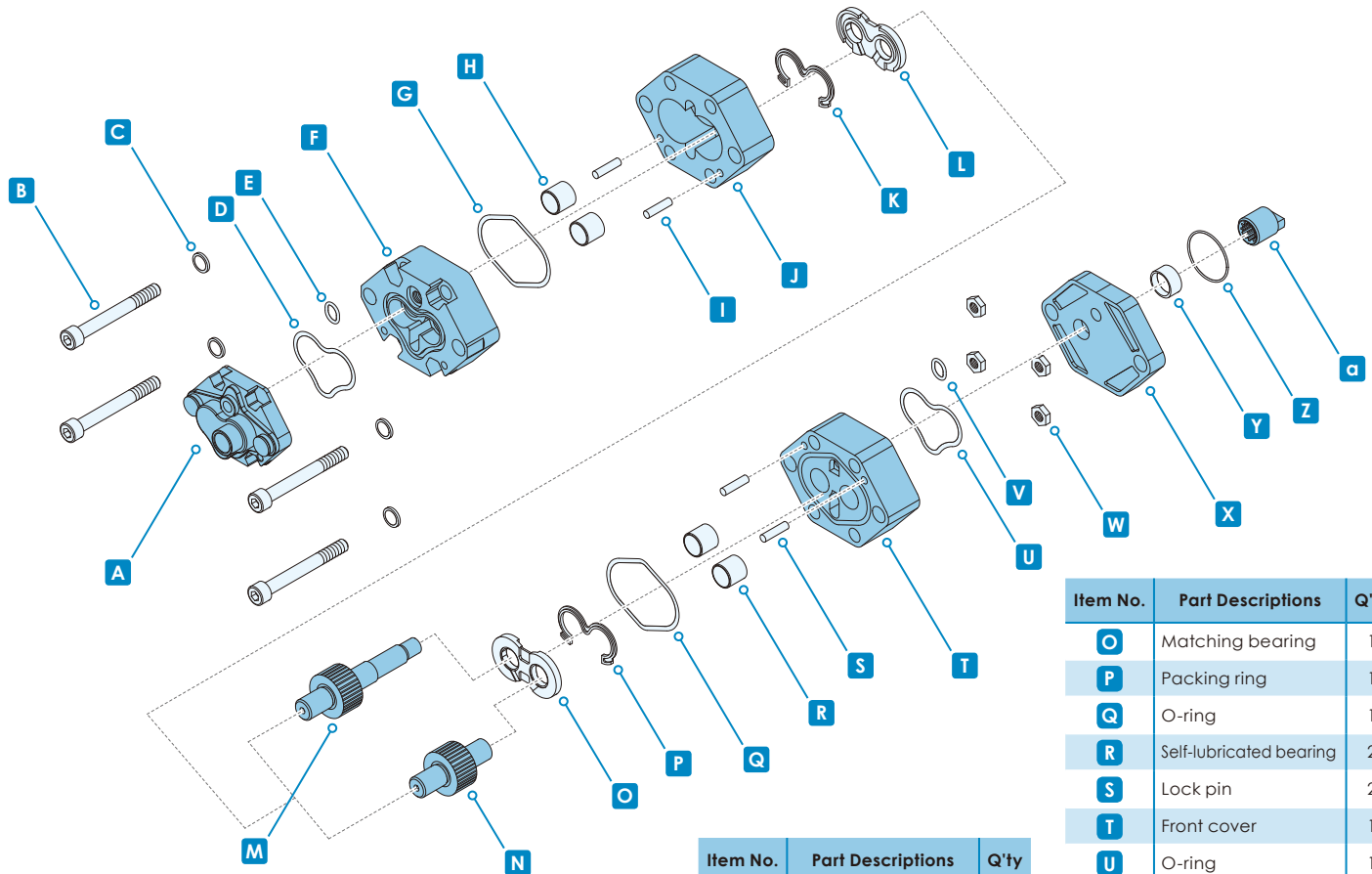
## SPECIFICATIONS

Model	Accurate Displacement Capacity ( cc/rev )	Operational Pressure ( kgf/cm <sup>2</sup> )	Max. Pressure ( kgf/cm <sup>2</sup> )	Speed ( r.p.m. )			Weight ( kg )
				Rate	Max.	Min.	
HGP-1.5A-08	0.8	300	350	1800	5000	1000	0.89
HGP-1.5A-1	1	300	350	1800	5000	800	0.91
HGP-1.5A-12	1.2	300	350	1800	5000	800	0.92
HGP-1.5A-16	1.6	300	350	1800	5000	800	0.93
HGP-1.5A-2	2	300	350	1800	4000	800	0.94
HGP-1.5A-25	2.5	300	350	1800	4000	800	0.95
HGP-1.5A-3	3.1	300	350	1800	4000	700	0.97
HGP-1.5A-4	4	300	350	1800	4000	600	1.00
HGP-1.5A-5	5	250	300	1800	4000	500	1.04
HGP-1.5A-65	6.3	250	300	1800	3200	500	1.14
HGP-1.5A-8	8	210	250	1800	2400	500	1.17

**DIMENSIONS ( unit : mm )**


← Outlet  
 ← Inlet

Model	L	Model	L	Model	L
HGP-1.5A-08	64.6	HGP-1.5A-2	67.6	HGP-1.5A-5	75.6
HGP-1.5A-1	65.1	HGP-1.5A-25	68.6	HGP-1.5A-65	79.6
HGP-1.5A-12	65.6	HGP-1.5A-3	70.1	HGP-1.5A-8	82.6
HGP-1.5A-16	66.6	HGP-1.5A-4	72.6		

**DECOMPOSITION CHARTS**


Item No.	Part Descriptions	Q'ty
<b>A</b>	Rear cover	1
<b>B</b>	Bolt	4
<b>C</b>	Bolt washer	4
<b>D</b>	O-ring	1

Item No.	Part Descriptions	Q'ty
<b>E</b>	O-ring	1
<b>F</b>	Rear cover	1
<b>G</b>	O-ring	1
<b>H</b>	Self-lubricated bearing	2

Item No.	Part Descriptions	Q'ty
<b>I</b>	Lock pin	2
<b>J</b>	Housing	1
<b>K</b>	Packing ring	1
<b>L</b>	Matching bearing	1
<b>M</b>	Drive gear	1
<b>N</b>	Driven gear	1

Item No.	Part Descriptions	Q'ty
<b>O</b>	Matching bearing	1
<b>P</b>	Packing ring	1
<b>Q</b>	O-ring	1
<b>R</b>	Self-lubricated bearing	2
<b>S</b>	Lock pin	2
<b>T</b>	Front cover	1
<b>U</b>	O-ring	1
<b>V</b>	O-ring	1
<b>W</b>	Nut	4
<b>X</b>	Front cover	1
<b>Y</b>	Shaft seal	1
<b>Z</b>	O-ring	1
<b>a</b>	Couplings	1